

Get set Southwark



London 2012

Operational Planning in Southwark



**Regeneration and Leisure Scrutiny
Committee**

Monday 23 April 2012

Welcome...



94 days to go...!



Coming up...

- **Key Dates**
- **Impact**
- **Operational planning group**
- **Essential services**
- **The operational plan**
- **Transport and networks**
- **Advice to businesses**



Key dates

- Olympic Torch Relay starts (UK Wide) 18 May 2012
- Olympic Route Network opens 15 Jul 2012
- Torch Relay arrives in London 21 Jul 2012
- Torch Relay arrives in Southwark 26 July 2012
- Olympics – Opening Ceremony 27 Jul 2012
- Olympics – Closing Ceremony 12 Aug 2012
- Paralympics – Opening 29 Aug 2012
- Paralympics – Closing 09 Sept 2012



IMPACT

Impact on London

- 8 million tourists expected if this was a typical year.
- Extra 4 million people expected
- 20 million extra trips will be made within London during the 2012 Games
- 80% of spectators will travel by rail (including the Underground)



IMPACT

Impact on Services

The Games are likely to impact in four main areas:



- **Journeys to and from work (commute)**
- **Travel for customers or other visitors**
- **Business travel**
- **Deliveries / collections and other suppliers**



Operational planning group

The operational planning group was established in November 2010. The group's primary responsibility is to ensure Southwark supports an inspirational, safe and inclusive games while planning to minimise disruption of services for Southwark residents

The group considers the following impacts:

- Footfall
- Cleanliness
- Safety and security
- Illegal trading / environmental enforcement / licensing
- Emergency planning
- **Operational planning and testing**
- **Transport and networks**



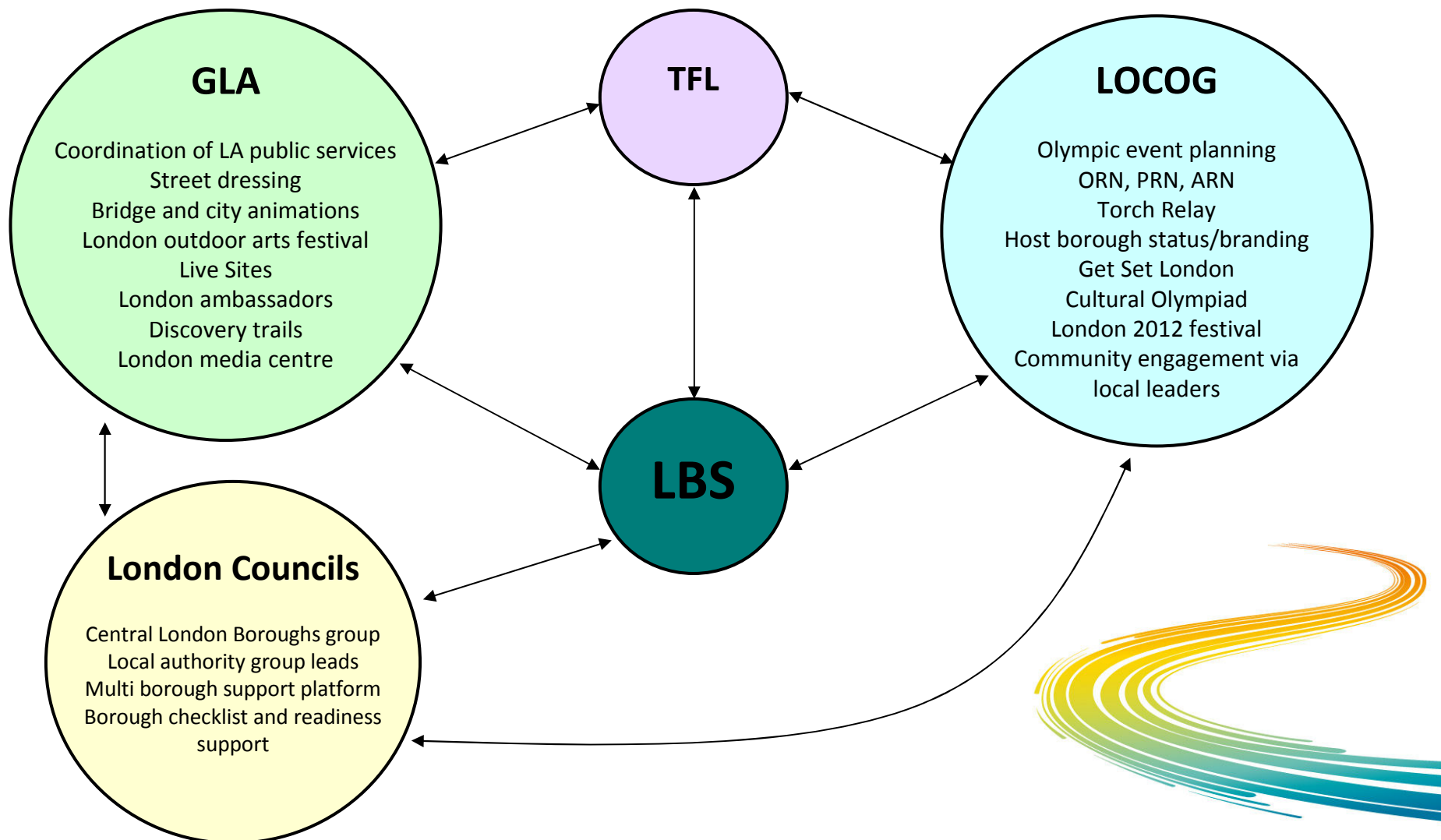
Operational planning group

Working in partnership with:

- BIDs
- Local landowners
- Emergency services
- Network Rail
- TfL
- London 2012 City operations and associated agencies
- Neighbouring local authorities
- London Councils
- NHS



How we interact with main external Olympic agencies on London 2012



Operational plan

Essential Council Services for London 2012

Street cleansing and waste management (collection and disposal) A huge increase in visitor numbers along the river is expected. Event spectators will also be travelling earlier and later, effectively increasing the number of hours that street cleaning services and waste disposal will need to operate. Other obstacles include mitigating the risk of rubbish build up when the waste fleet may not have normal freedom of movement

Licensing, environmental health and trading standards

The safety of visitors, residents and spectators is paramount. It therefore necessary to ensure that licensing applications and conditions are managed and adhered to and the high standards of health and safety and trading standards currently observed remain so despite longer trading hours and higher footfall

Advertising and Street Trading

Preventing unlicensed traders from exploiting visitors; preventing ambush marketing and spotting illegal merchandise.

Parking services and enforcement

Roads, streets and highways, including the ARN need to be kept as free from obstruction as possible. Capacity to deal with illegally parked vehicles and issues as and when they arise is important if we are to contribute to free flowing traffic.

Operational plan

Essential Council Services for London 2012

Traffic, road and network management

Working in partnership with TFL, it is vital that roads and highways are kept as clear as possible and free from road works and congestion

Emergency planning

The emergency plan must remain viable and distinct from Olympic operation structures to ensure that emergencies are dealt with effectively despite resources being allocated to the Games.

Events

Larger numbers of events are planned and expected during Games time. Last minute changes, applications and event support will need to be dealt with in a timely manner. Events team are central to responding to event issues.

Adult health and social care / Children's services

Both services need to consider the impact of inhibited travel on services, deliveries and transport.

Increased risk of child trafficking and new adult social care cases expected during Games time.

Operational plan

Essential services

External agencies & partners

Day to day issues and incidents



The Operational plan

The council's day to day coordination of resources, essential services and external partners in responding to service pressures and incidents related to the London 2012 Games

The Operational Plan

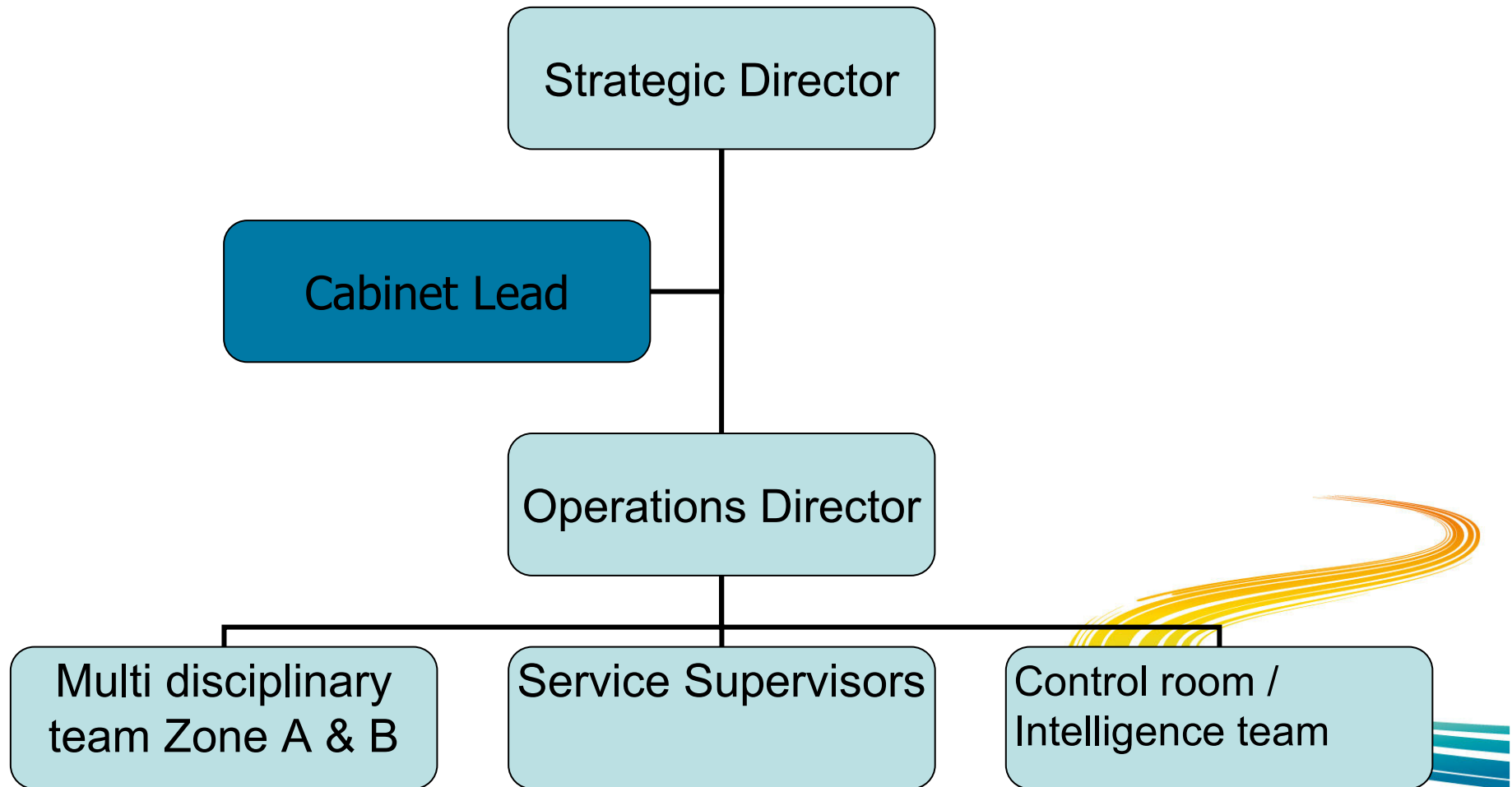
Summary

- Operational structure in place with staff on rotation
- 3 geographical zones
- Multi disciplinary teams able to tackle all manner of issues
- Control room and intelligence rooms based at Tooley St
- 24/7 capability
- Linked in to all partners and agencies and emergency services
- **Operational plan reviewed weekly and can be scaled back in response to low pressures to reduce resource demand**
- **READY TO GO**



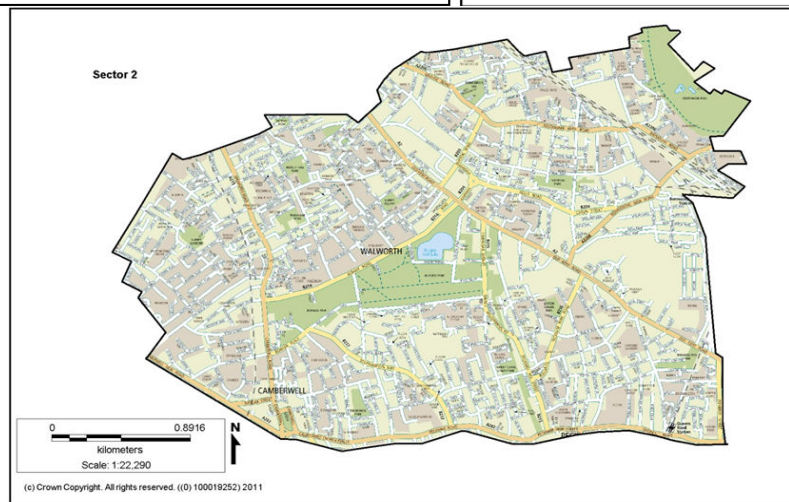
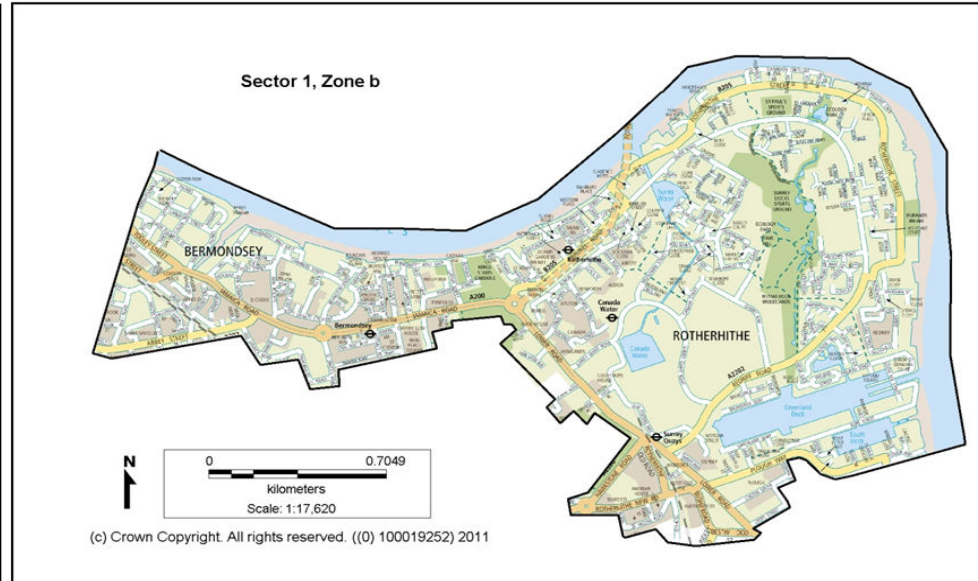
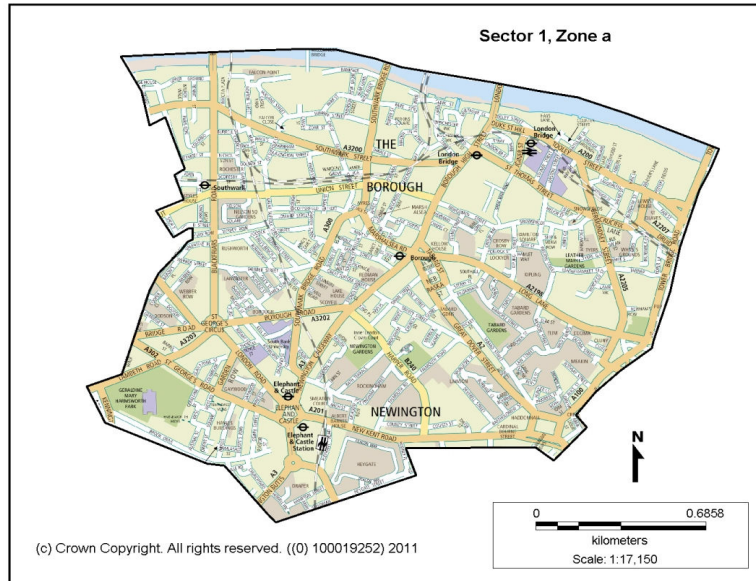
The Operational Plan

Testing the operational structure



The Operational Plan

Olympic zones



The Operational Plan

Operational management :

- 2 daily briefing sessions of the Operations Group service leads, chaired by the Operations Director at 11am and 5pm
- Review: what's happened; what we anticipate will happen; our resources
- Use mapping tools and live data to assess the issues
- Links with London Bridge Station, MPS Southwark, TfL operations
- Twice daily communications release available to business networks



The Operational Plan

Inputs – Sunday 29th July 2012 - Example

Session					
Session with medals awarded		Sunday 29th July 2012			
Sport	Venue	Morning	Day	Evening	Details
Archery	Lords Cricket Ground	09:00 - 12:20	n/a	15:00 - 19:00	Womens team events
Badminton	Wembley Arena	08:30 - 11:00	12:30 - 17:00	18:30 - 23:00	Mens & womens preliminaries
Basketball	Olympic park - Basketball Arena	09:00 - 13:00	14:30 - 18:30	20:00 - 00:00	Mens preliminaries
Beach volleyball	Horse Guards Parade	09:00 - 12:50	14:30 - 18:20	20:00 - 23:50	Mens & womens preliminaries
Boxing	ExCel	n/a	13:30 - 16:30	20:30 - 23:30	Light & welter weight
Canoe Slalom	Lee Valley white water centre, Hertfordshire	n/a	13:30 - 17:40	n/a	Canoe & kayak heats
Cycling - Road	The Mall	n/a	12:00 - 16:15	n/a	Womens road race
Diving	Olympic Park - Aquatics Centre	n/a	15:00 - 16:10	n/a	3m womens synchronised final
Equestrian - Eventing	Greenwich park	10:00 - 16:15		n/a	Mens & womens dressage
Fencing	ExCel	10:30 - 14:00	n/a	18:00 - 19:50	Mens individual sabre
Football	City of Coventry stadium	n/a	14:30 - 19:15		Preliminaries (2 games)
	Old Trafford, Manchester	n/a	12:00 - 16:45	n/a	Preliminaries (2 games)
	St James' Park	n/a	n/a	17:00 - 21:45	Preliminaries (2 games)
	Wembley Stadium	n/a	n/a	17:00 - 21:45	Preliminaries (2 games)
Gymnastics - Artistic	North Greenwich Arena	09:30 - 12:45	14:45 - 18:00	20:00 - 21:30	Womens qualification
Handball	Olympic park - Handball Arena	09:30 - 12:45	14:30 - 17:45	19:30 - 22:45	Womens preliminaries
Hockey	Olympic park - Hockey Arena	08:30 - 12:15	13:45 - 17:30	19:00 - 22:45	Womens preliminaries
Judo	ExCel	09:30 - 12:30	14:00 - 16:30	n/a	Mens & womens eliminations and finals. 66kg & 52kg
Rowing	Eton Dorney, Buckinghamshire	09:30 - 11:50	n/a	n/a	Mens & Womens various
Sailing	Weymouth and Portland, Dorset	n/a	12:00 - 18:00	n/a	Mens & womens
Shooting	The Royal Artillery barracks	09:00 - 17:30		n/a	Womens 10m air pistol & Skeet
Swimming	Olympic Park - Aquatics Centre	10:00 - 12:50	n/a	19:30 - 21:35	Inc mens 200m Freestyle semi & womens 400m
Table Tennis	ExCel	09:00 - 12:00	13:30 - 16:30	18:00 - 22:00	Mens & Womens singles
Tennis	Wimbledon	11:30 - 20:00			Mens & Womens singles and doubles
Volleyball	Earls Court	09:30 - 13:00	14:45 - 18:15	20:00 - 23:30	Mens preliminaries
Water Polo	Olympic park - Water polo Arena	10:00 - 12:40	14:10 - 16:50	18:20 - 21:00	Mens preliminaries
Weightlifting	ExCel	10:00 - 14:00	15:30 - 17:30	19:00 - 21:00	53kg & 56kg mens & womens

The Operational Plan

Inputs – Sunday 29th July 2012 - Example

LECC – events 2012



ID	Title	Start	End	Venues	Capacity	Anticipated Audience
63572	Amazonas Spectacular	21/02/2012	28/07/2012	Bruohaha International Festival, UK Centre for Carnival Arts-Luton- Seachange Great Yardmouth	30000	3001
64584	Capital Age Festival 2012	07/07/2012	22/07/2012	London-wide	30000	25001
65748	Olympic Womens Marathon	05/08/2012	05/08/2012	Tower Bridge Exhibition	100000	50001
70160	Olympic and Paralympic Live Site - Potters Field Pa	27/07/2012	11/09/2012	Potters Field Park	4000	3001
70322	The Little Chillii Festival of Music from Asia	01/07/2012	31/07/2012	various	1000	1001
70458	House of Switzerland-Olympic games	20/07/2012	15/08/2012	Montague Close, London Bridge-including Glaziers Hall, SOuthwark Cathedral and Cathedral Squ	2500	1001
70906	House of Switzerland	20/07/2012	12/08/2012	Glaziers Hall, 9 Montague Close, London & 4 other spaces adjoining Glaziers Hall	600	501
71222	Waterloo Quarter Food Festival 2012	29/06/2012	31/07/2012	Various	200	0
71344	Latinsport brigade	24/06/2012	22/07/2012	Burgess Park	5001	501
71382	New Zealand House	26/07/2012	13/08/2012	Novotel London City South Hotel, 53-61 Southwark Bridge Road	1000	501
72178	The Olympic Torch Relay TBC	21/07/2012	26/07/2012	TBC	1000000	50001
72202	Outdoor Arts Festival	21/07/2012	09/09/2012	Town Centres	1000	501
72354	HMS Belfast - TBC	31/05/2012	31/07/2012	HMS Belfast	3000	2001
72598	AAPAE London Invitational	24/07/2012	13/08/2012	Hay's Galleria	1000	2001
73216	Frances Bucket's Touring Ice Cream Van	25/07/2012	09/09/2012	Multiple - various sites across the Olympic Area	500	0
74506	Choirs Inspire	01/05/2012	31/07/2012	Peckham Square	1000	1001
74630	The Concerto Group	25/07/2012	13/08/2012	Bankside Vaults, Invicta Plaza, London	1300	1001
75014	Zombie Head Toss	25/07/2012	25/07/2012	London Bridge Experience	5000	1001
75274	Monumental Podiums: We Are the Champions	23/07/2012	12/08/2012	Nunhead Cemetery	5001	5001
76066	Slow Down Planet	27/07/2012	12/08/2012	Various venues	1000	501
76102	Youth Dance Weekend at The Scoop	01/07/2012	31/07/2012	The Scoop	1000	501
76706	Bermondsey & Rotherhithe Carnival	21/07/2012	21/07/2012	Southwark Park, London	30000	2001

Sunday 29th July Footfall – (Example)

Footfall (underground)

Tube entries & Exits					
		Southwark	London Bridge	Borough	Elephant & Castle
Entries	Weekday early	229	2752	128	985
	Weekday A.M peak	3476	30311	1340	7586
	Weekday inter peak	4019	25496	2231	9275
Exits	Weekday early	345	1480	84	386
	Weekday A.M peak	8136	24212	2828	6578
	Weekday inter peak	4589	24338	2211	8674
Totals		20794	108588	8822	33484

Crime

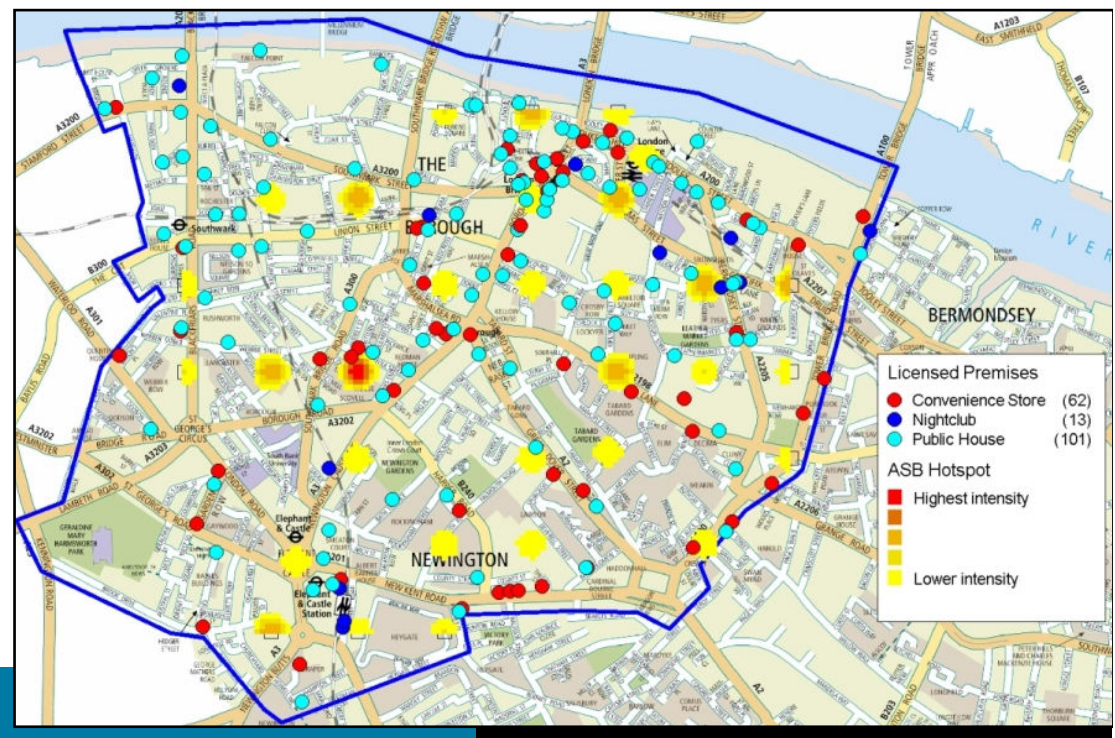
Sector 1, Zone A, July 2010 1000 - 1159



(c) Crown Copyright Ordnance Survey, London Borough of Southwark. Licence No 0100019252 2010

Sport	Venue	Morning
Archery	Lords Cricket Ground	09:00 - 12:20
Badminton	Wembley Arena	08:30 - 11:00
Basketball	Olympic park - Basketball Arena	09:00 - 13:00
Beach volleyball	Horse Guards Parade	09:00 - 12:50
Boxing	ExCel	n/a
Canoe Slalom	Lee Valley white water centre, Hertfordshire	n/a
Cycling - Road	The Mall	n/a
Diving	Olympic Park - Aquatics Centre	n/a
Equestrian - Eventing	Greenwich park	10:00 - 16:15
Fencing	ExCel	10:30 - 14:00
Football	City of Coventry stadium	n/a
	Old Trafford, Manchester	n/a
	St James' Park	n/a
	Wembley Stadium	n/a
Gymnastics - Artistic	North Greenwich Arena	09:30 - 12:45
Handball	Olympic park - Handball Arena	09:30 - 12:45
Hockey	Olympic park - Hockey Arena	08:30 - 12:15
Judo	ExCel	09:30 - 12:30
Rowing	Eton Dorney, Buckinghamshire	09:30 - 11:50
Sailing	Weymouth and Portland, Dorset	n/a
Shooting	The Royal Artillery barracks	09:00 - 17:30
Swimming	Olympic Park - Aquatics Centre	10:00 - 12:50
Table Tennis	ExCel	09:00 - 12:00
Tennis	Wimbledon	11:30 - 20:00
Volleyball	Earls Court	09:30 - 13:00
Water Polo	Olympic park - Water polo Arena	10:00 - 12:40
Weightlifting	ExCel	10:00 - 14:00

ASB & licensing



The Operational Plan

Inputs -- Example



The screenshot shows a mobile news page from BBC News London. The top navigation bar includes 'BBC Mobile' and links for 'News', 'Sport', 'Weather', 'iPlayer', and 'TV'. Below this is the 'NEWS LONDON' header with a sub-menu for 'Home', 'World', 'UK', 'England', 'N. Ireland', 'Scotland', 'Wales', 'Business', 'Politics', 'Health', 'Education', and 'Sci/Env'. The main content area features a timestamp '28 July 2012 Last updated at 12:00' and social sharing icons for 'Share', Facebook, Twitter, Email, and Print. The headline reads 'Breaking news: Suspect package found at Tower Bridge'. The text below the headline states: 'The Metropolitan Police bomb squad is currently being deployed to Tower Bridge to investigate a suspect package left on the number 78 bus.' A second paragraph describes the discovery: 'Shortly before 11am today, a call was made to the emergency services to alert them to a mysterious backpack that was left unattended on the bus. A passenger noticed the bag and alerted the bus driver, who dispatched the message to the TfL control room.' A third paragraph provides further details: 'It is currently unclear whether there are any explosives involved, but a spokesperson for the Metropolitan Police has confirmed that their explosives experts are on their way to the scene. Police sniffer dogs have also been dispatched. A cordon has been put in place and Tower Bridge is currently closed. There is major traffic backlog on surrounding roads. The public is advised to stay away from the area.' To the right of the text is a photograph of Tower Bridge with the Olympic rings overlaid. Below the photo is a 'Related Stories' section with a link to 'Standstill traffic in Bermondsey'. The page also features a '10' badge and a decorative orange swirl graphic on the right side.

28 July 2012 Last updated at 12:00

Breaking news: Suspect package found at Tower Bridge

The Metropolitan Police bomb squad is currently being deployed to Tower Bridge to investigate a suspect package left on the number 78 bus.

Shortly before 11am today, a call was made to the emergency services to alert them to a mysterious backpack that was left unattended on the bus. A passenger noticed the bag and alerted the bus driver, who dispatched the message to the TfL control room.

It is currently unclear whether there are any explosives involved, but a spokesperson for the Metropolitan Police has confirmed that their explosives experts are on their way to the scene. Police sniffer dogs have also been dispatched. A cordon has been put in place and Tower Bridge is currently closed. There is major traffic backlog on surrounding roads. The public is advised to stay away from the area.

Related Stories

[Standstill traffic in Bermondsey](#)

Delegation of Resources

			12.00	12.30	13.00	13.30	14.00	14.30	15.00	15.30	16.00	16.30	17.00	17.30
Activity	Operatives	Equipment												
Street Cleaning (Weekdays) - North West Zone														
Night Cleansing	9	See Comment's box.												
Permanent Presence Litter Pickers	8	Litter picking kit												
Other Litter pickers	12	Litter picking kit												
Detritus Sweepers	12	Barrows + Applied sweepers												
Bag Crew	2	1 Dustcart												
Bulk/Fly Tip	4	1 x 7.5T Tipper, 1 x 3.5T Tipper												
Mechanical Broom	2	1 x Jonston 600, 1 x Scarab												
Graffiti Removal	2	1 Vehicle with jet washers												
Supervision	3	2 x Small Vans												
Markets	0	0												
Parking enforcement														
Mobile 1														
Mobile 2														
Mobile 3														
OBCEO 1														
OBCEO 2														
Mobile CCTV 1														
Mobile CCTV 2														
CEO1														
CEO2														
CEO3														
CCTV 1														
CCTV 2														
CCTV 3														
CCTV 4														
CCTV 5														
EHTS														
Food safety inspection, Health and Safety inspections, Private sector Housing inspections (HMOs), Trading Standards Inspections	Full daytime staff approx 70 staff	Variable												
Reactive Environmental Health complaints	Full daytime staff Approx 70 staff	Variable												
Licensing Inspection (Sunday to Thursday)	Full daytime staff approx 10 staff	Variable												
Noise service requests (Monday to Thursday)	2 officers	Variable												
Out of Hours Emergency Rota (Food Safety)	1 officers	As required												
Out of Hours Emergency rota (Environmental Health)	1 officer	As required												
Community Wardens														

Transport and networks

Major pressure expected on transport networks, road networks and stations

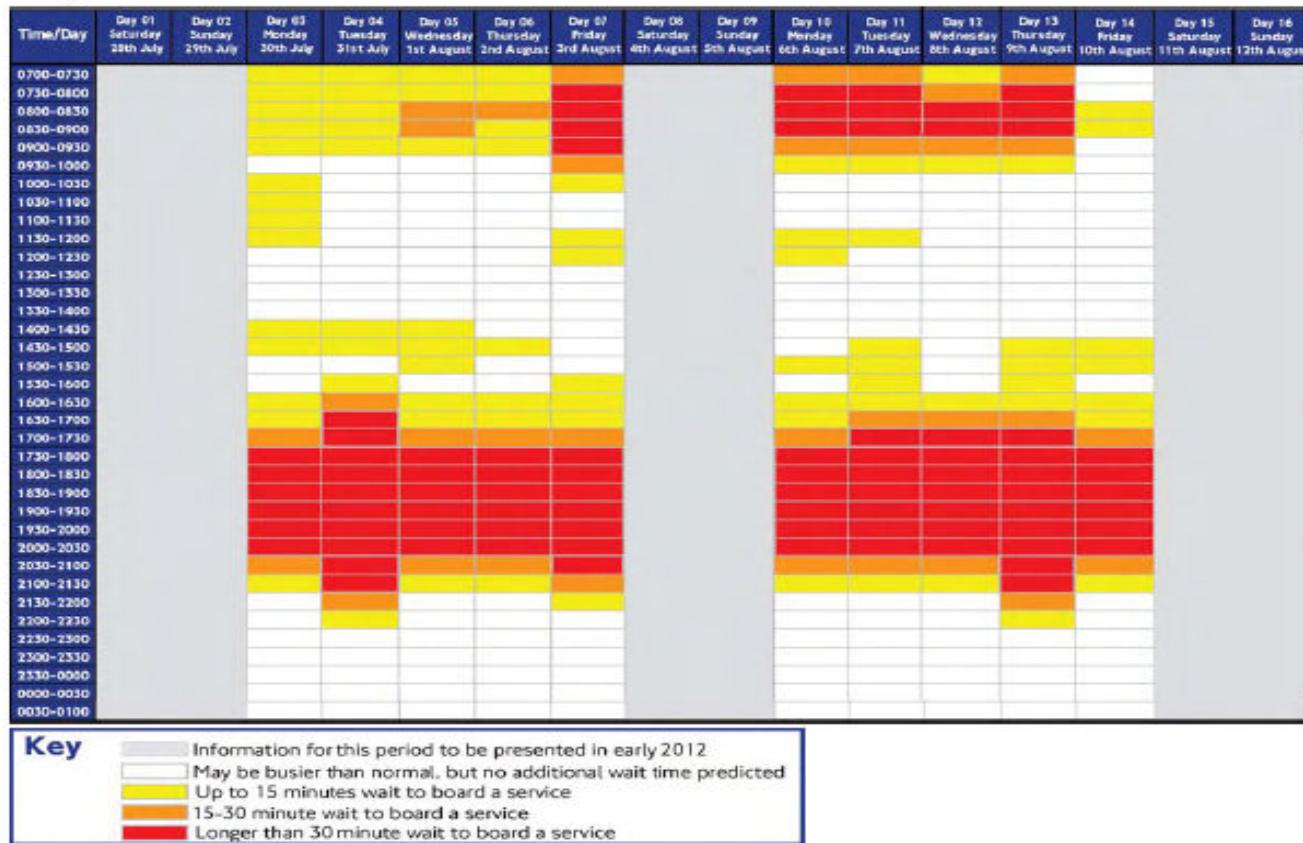
Due to proximity to Olympic Park and access via Jubilee Line, London Bridge Station is expected to be among the busiest stations in London and the UK during Games time.

Southwark council is working with TfL, network rail and LB station to manage heavy demand

Transport and networks

London underground issues

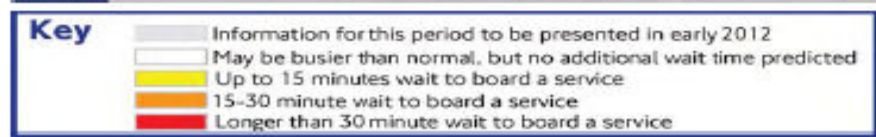
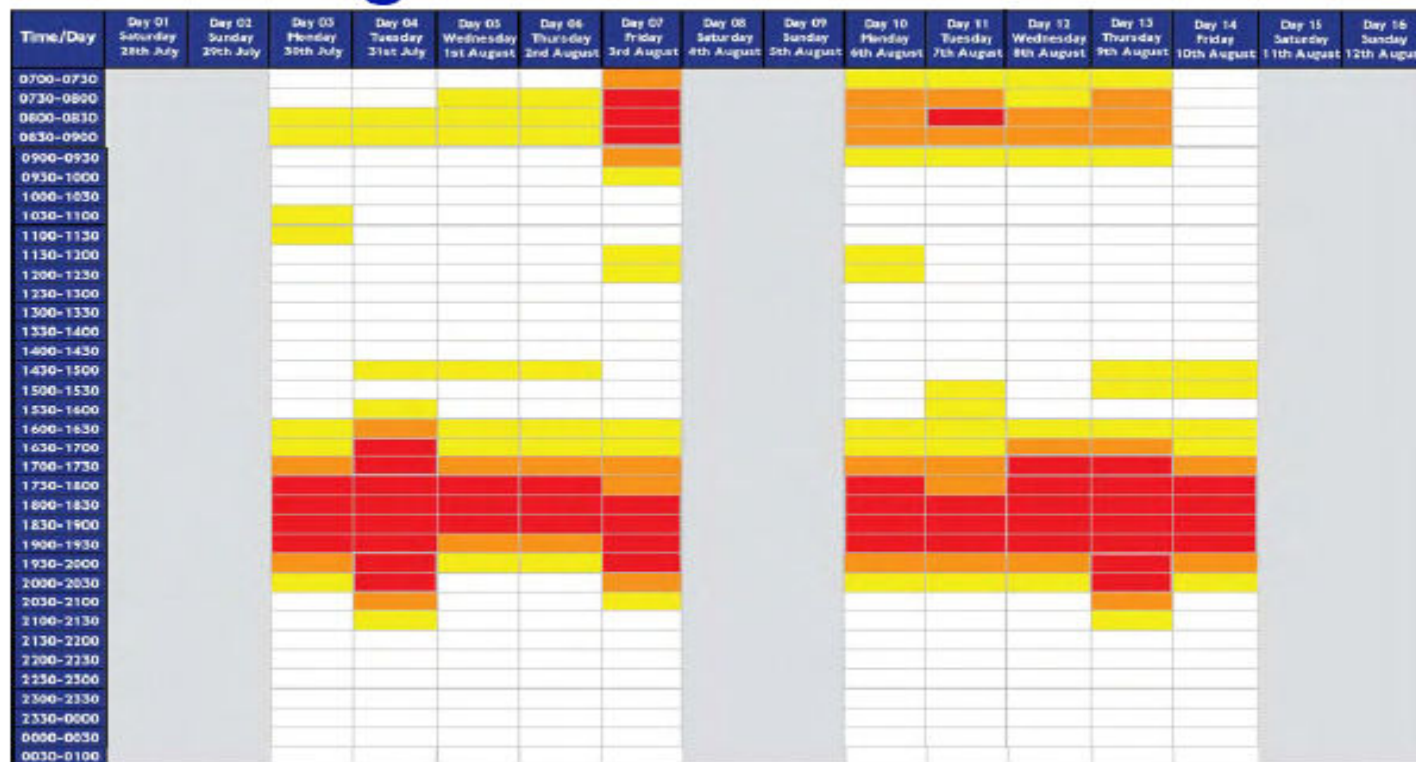
London Bridge Tube station waiting times if no change in behaviour



Transport and networks

London underground issues

London Bridge Tube station waiting times, after initial change in behaviour



Transport and networks

Road Networks

- **ORN = Olympic Route Network**

X Not in Southwark

The network of Olympic lanes dedicated to athletes and VIP travel and linking the competition venues

- **AORN = Alternative Olympic route network**



Section in Southwark

The AORN will be implemented in the event that for whatever reason the ORN cannot be used and when the marathon road races are on.

- **REORN = Road Event Olympic route network**

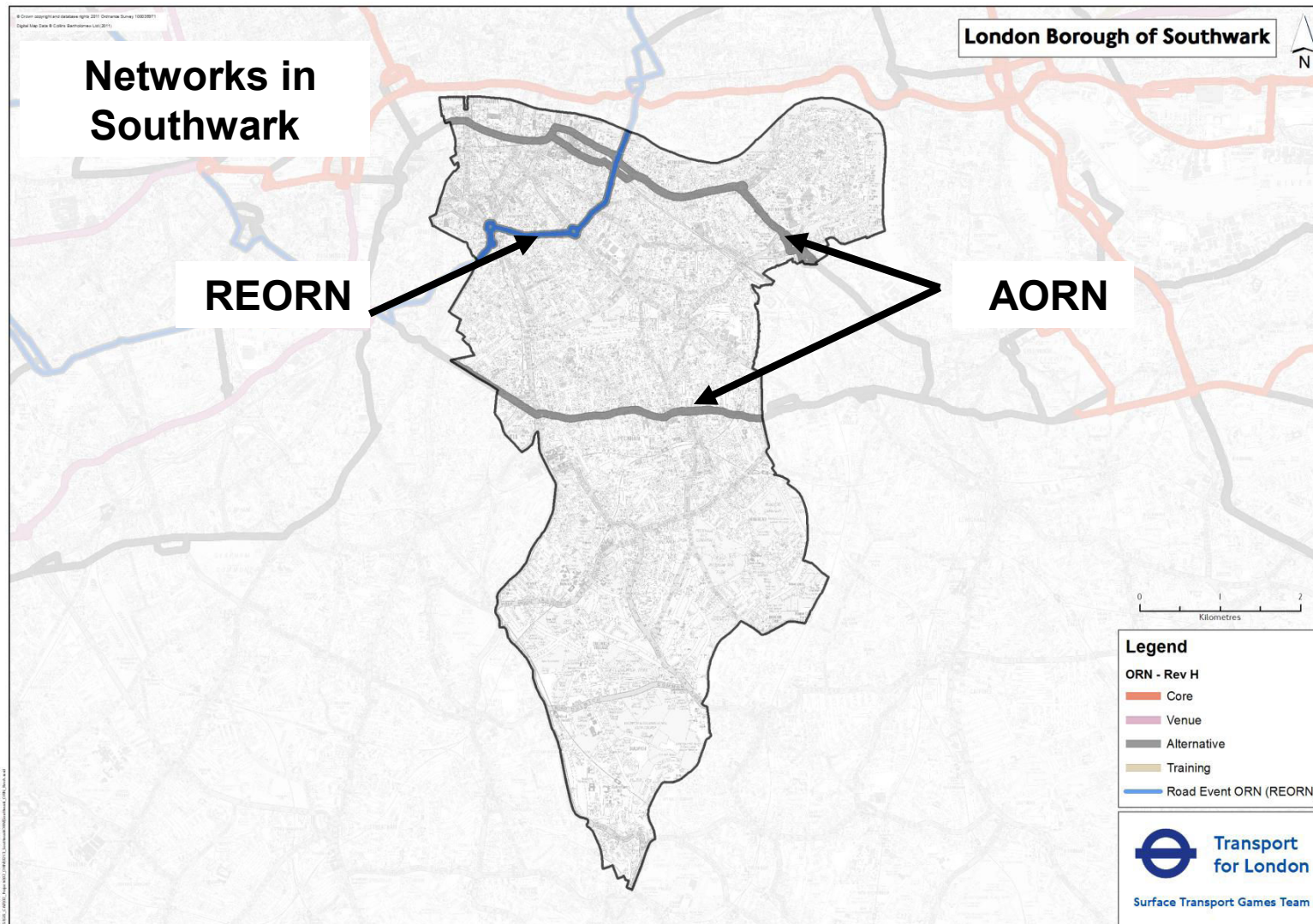


Section in Southwark

The REORN will be implemented during road events.



Transport and networks



Transport and networks

REORN = Road Event Olympic route network

- Only Marathon days will directly impact Southwark
- A201 New Kent Road & A100 Tower Bridge Road
- Days of Operation:
 - **Day 9** **Sunday 5th August 2012**
 - **Day 16** **Sunday 12th August 2012**
- Types of Measures:
 - Traffic signal timing changes (similar to current policy on A201/A100 corridor)
 - Stopping restrictions adjusted



Road works during London 2012

TfL approach

TfL embargo preventing all non emergency street works/road works on:

- The ORN, AORN and REORN from **1st March 2012 to 30th September 2012**
- All A and B roads throughout London from **1st July 2012 to 30th September 2012**

Southwark's approach

- A road works embargo will be placed on all roads in the north of the borough.
- Southwark's embargo enforced from **1st July 2012 – 9th September 2012.**
- Torch Relay Route: Rolling road closures



Advice to Businesses

Night time / out of hours deliveries

Southwark Council is not changing any of its current policies or restrictions but, along with TfL, we are advising businesses to plan ahead and consider the needs of local residents.

Steps to take now:

- Find out if your deliveries and collections will be affected by changes to the roads during the Games
- Consider the range of options available to you to minimize the impact
- Check your planning and licensing conditions
- Consider TfL's code of practice for night time deliveries

Advice to Businesses

- TfL have produced much advice for businesses on their website.
- TfL aims to minimise pressure on road networks caused by deliveries and supply chains while helping businesses to prepare themselves for increased trade.
- www.southwark.gov.uk/2012
– Business information
- www.tfl.gov.uk
- www.getaheadofthegames.com



Questions...



Thank you...

For any further information please contact

Paul Cowell
020 7525 0857
paul.cowell@southwark.gov.uk

Ben Finden
020 7525 1289
benjamin.finden@southwark.gov.uk

OR

By email to London2012@southwark.gov.uk

**REMEMBER TO SIGN UP TO THE GET SET
SOUTHWARK E-NEWSLETTER! Go to
www.southwark.gov.uk**

